

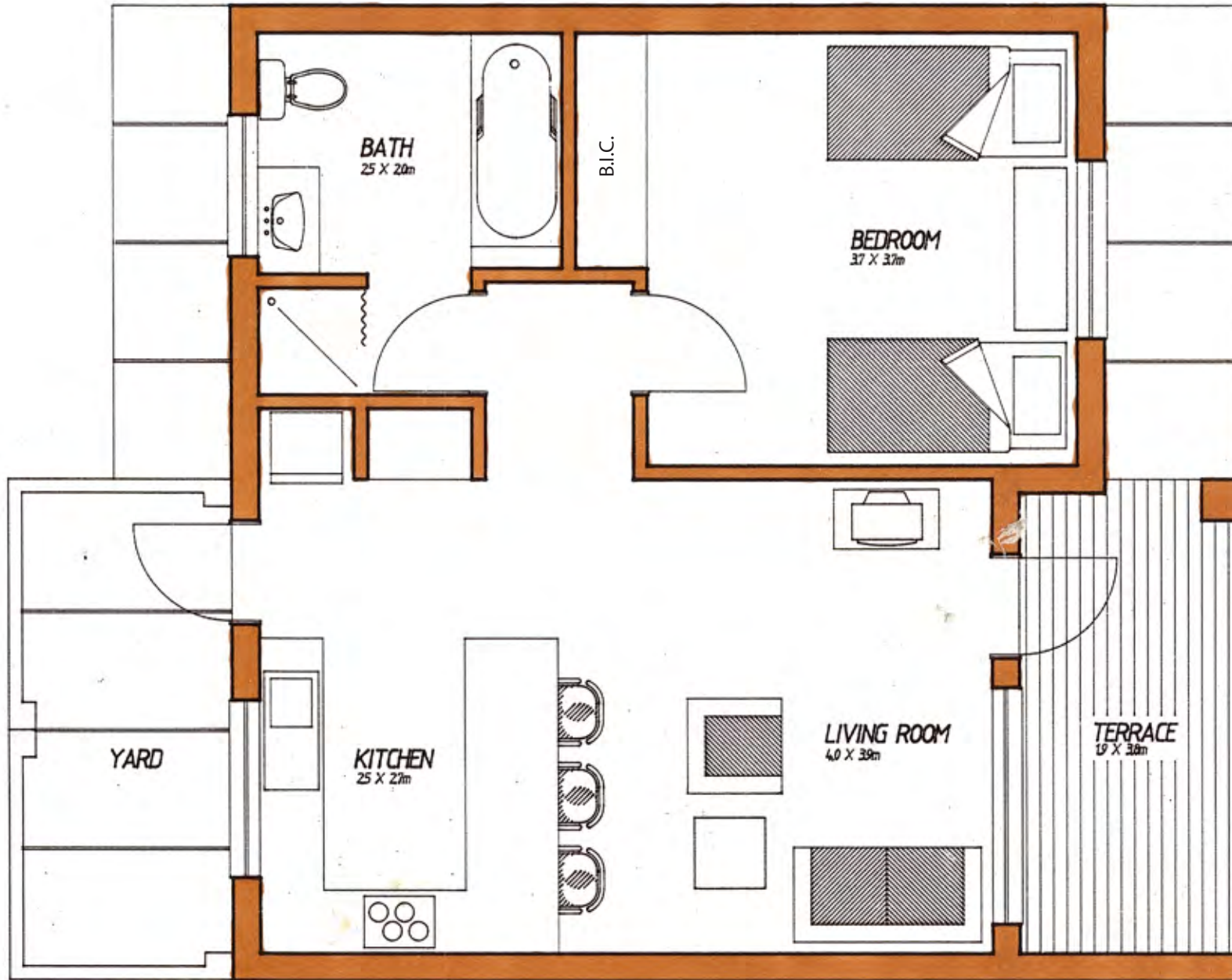
Housing Office
T: +27 33 355 0279
E: wghousing@padca.co.za
www.padca.co.za

28A Howick Road,
Pietermaritzburg, 3201

Unit Type: T1
Azalea

One Bed Terrace Unit

Typical Dimensions:
Unit Area: 56,2sqm
Terrace Area: 7,6sqm



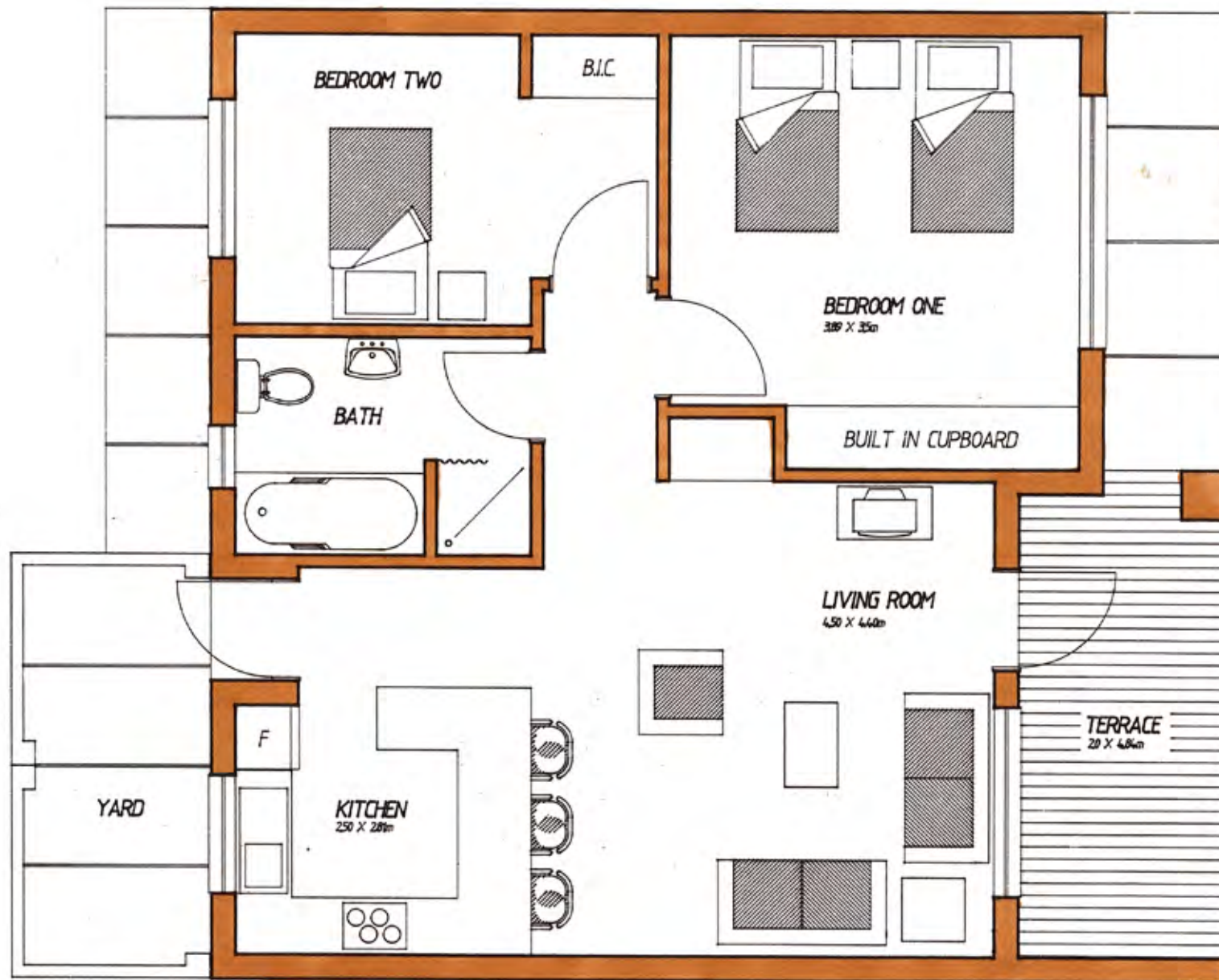
Housing Office
T: +27 33 355 0279
E: wghousing@padca.co.za
www.padca.co.za

28A Howick Road,
Pietermaritzburg, 3201

Unit Type: T2
Jasmine

Two Bed Terrace Unit

Typical Dimensions
Unit Area: 72,6sqm
Terrace Area: 9,68sqm



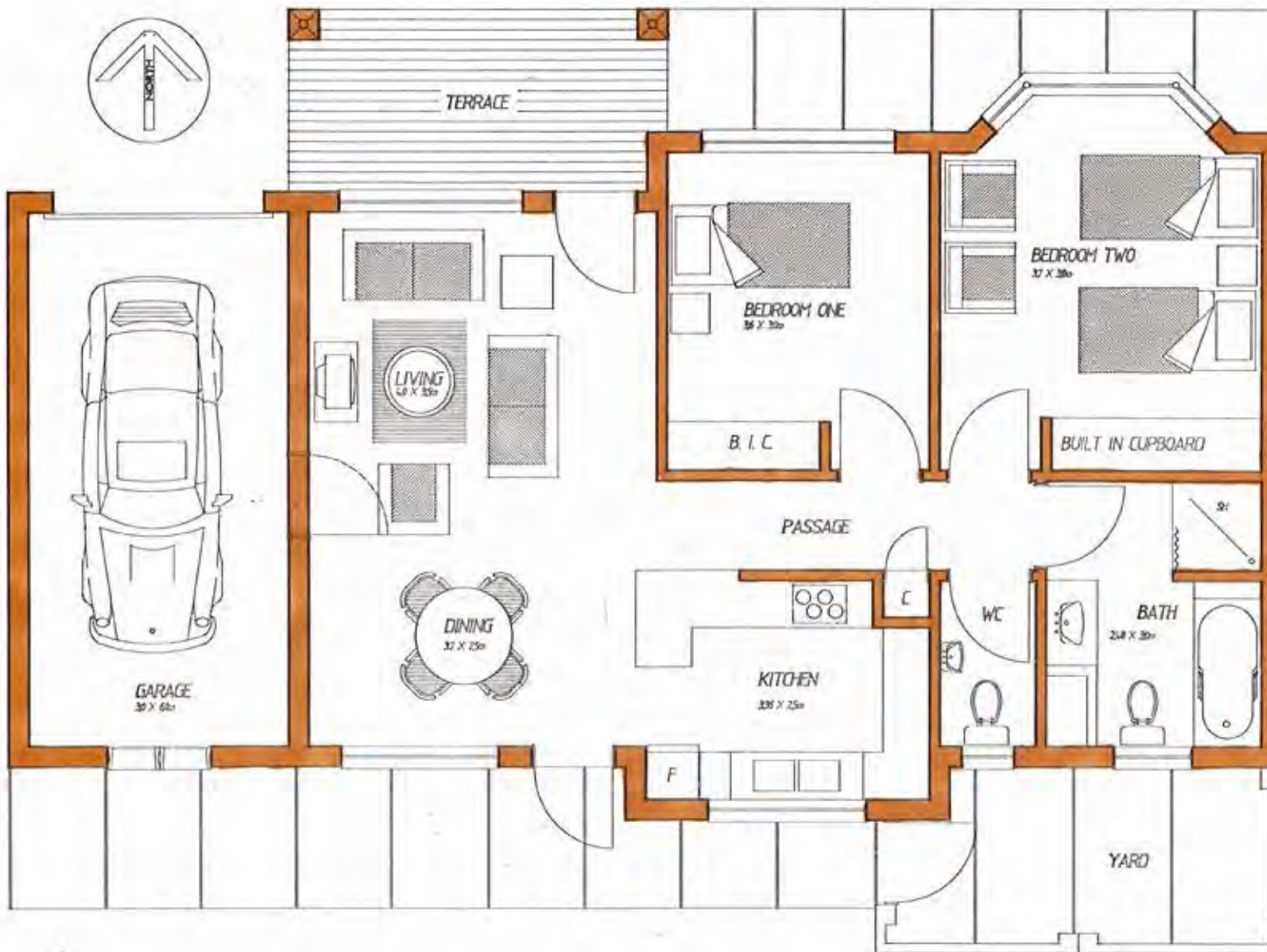
Housing Office
T: +27 33 355 0279
E: wghousing@padca.co.za
www.padca.co.za

28A Howick Road,
Pietermaritzburg, 3201

Unit Type: T3
Tulip

Two Bed Terrace Unit

Typical Dimensions
Unit Area: 82,8sqm
Terrace Area: 8,8sqm
Garage Area: 21sqm



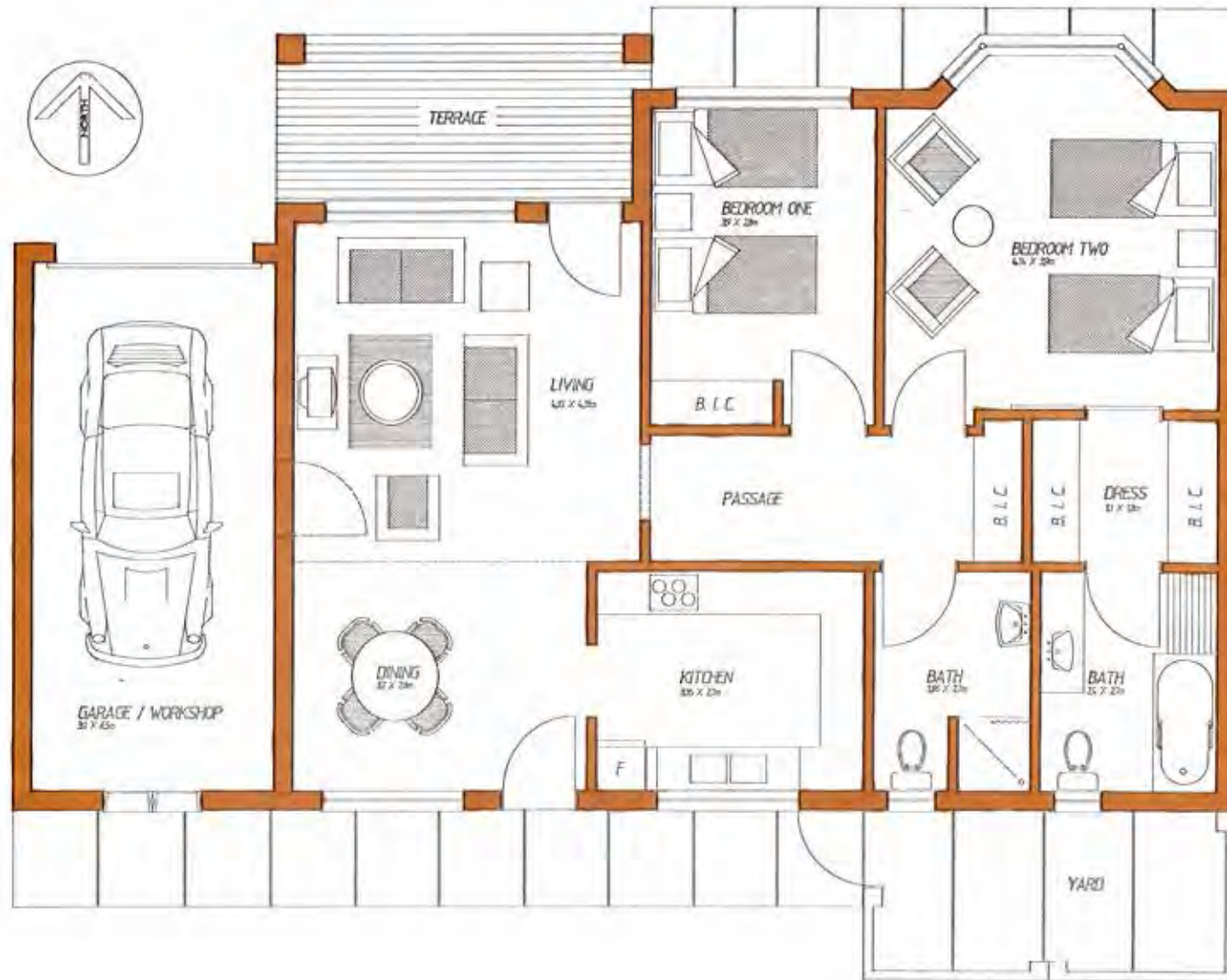
Housing Office
T: +27 33 355 0279
E: wghousing@padca.co.za
www.padca.co.za

28A Howick Road,
Pietermaritzburg, 3201

Unit Type: T4
Rose

Two Bed Terrace Unit

Typical Dimensions
Unit Area: 101,58sqm
Terrace Area: 15,30sqm
Garage Area: 51,95sqm



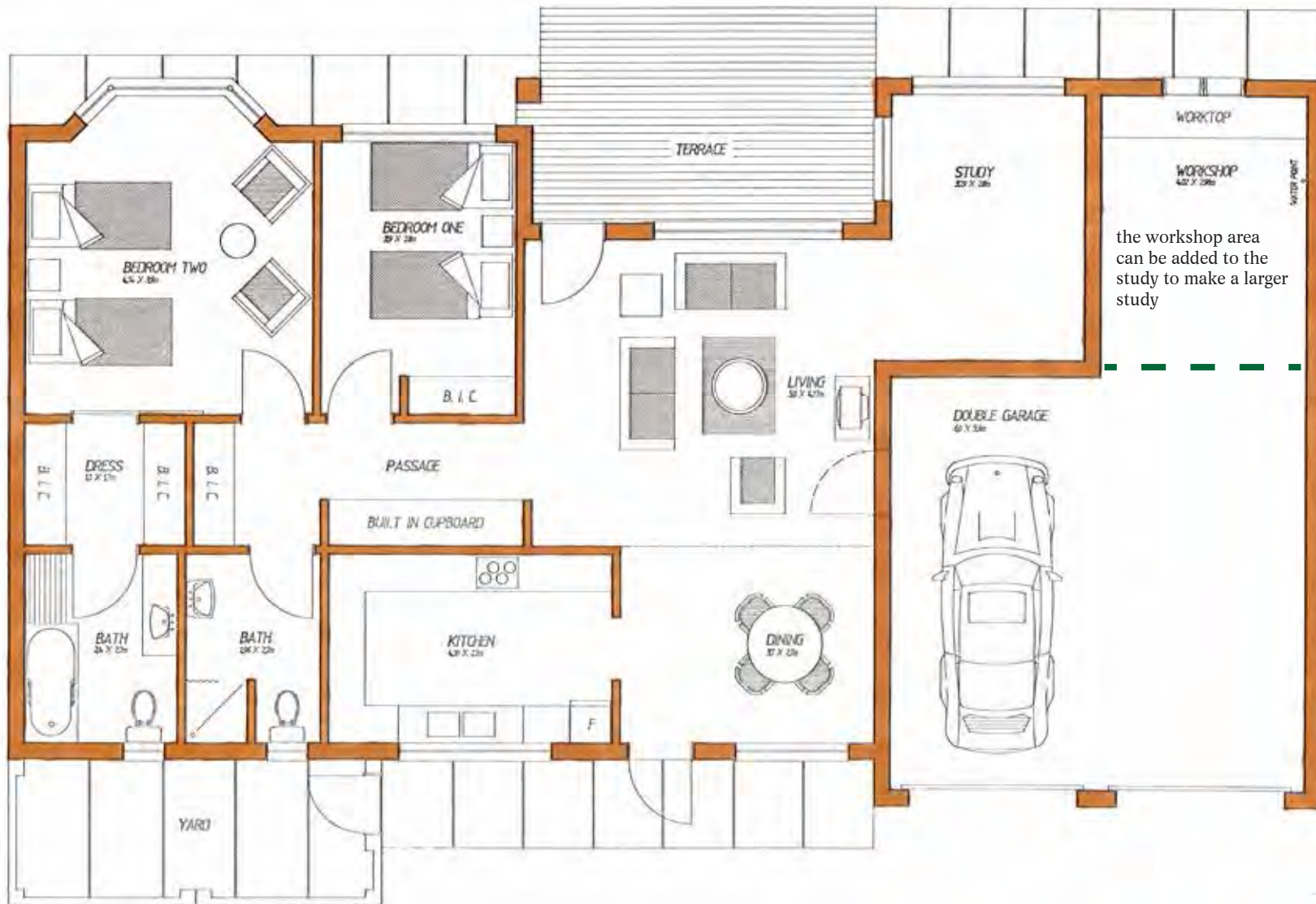
Housing Office
T: +27 33 355 0279
E: wghousing@padca.co.za
www.padca.co.za

28A Howick Road,
Pietermaritzburg, 3201

**Unit Type: T5
Protea**

Two Bed Study Unit

Typical Dimensions
Unit Area: 123,093sqm
Terrace Area: 19,29sqm
Garage Area: 51,95sqm



Housing Office
T: +27 33 355 0279
E: wghousing@padca.co.za
www.padca.co.za

28A Howick Road,
Pietermaritzburg, 3201

Unit Type: T7
Orchid

Two Bed Study Unit

Typical Dimensions:
Unit Area: 111,44sqm
Terrace Area: 15,30sqm
Garage Area: 20,24sqm

